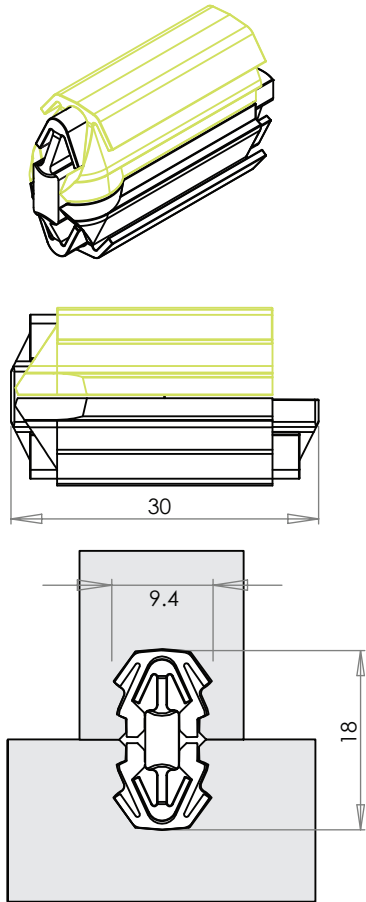


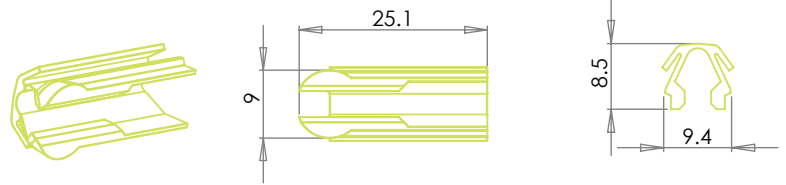
# OVVO® V Connection System

## V-0930 Releasable Specifications

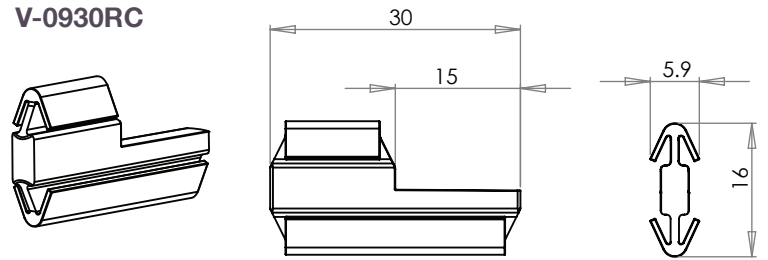
### V-0930 Releasable



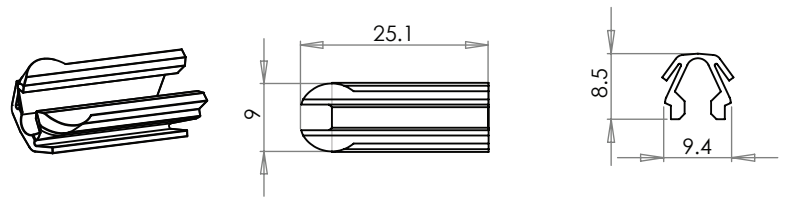
### V-0930RH



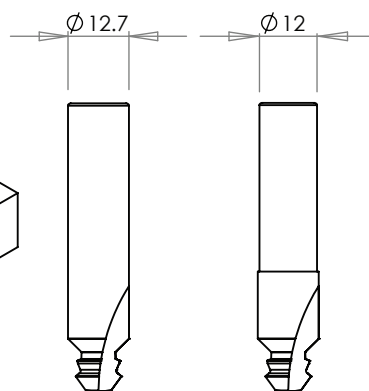
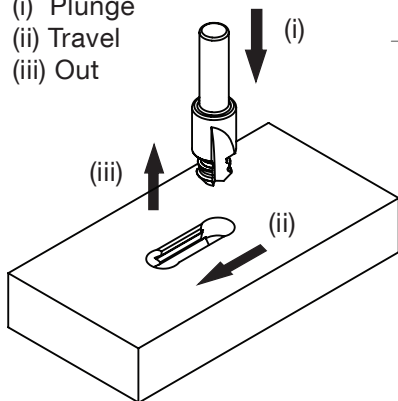
### V-0930RC



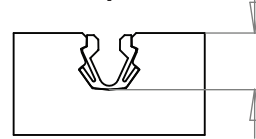
### V-0930PH



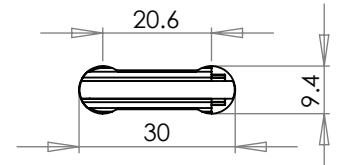
- (i) Plunge
- (ii) Travel
- (iii) Out



#### Depth



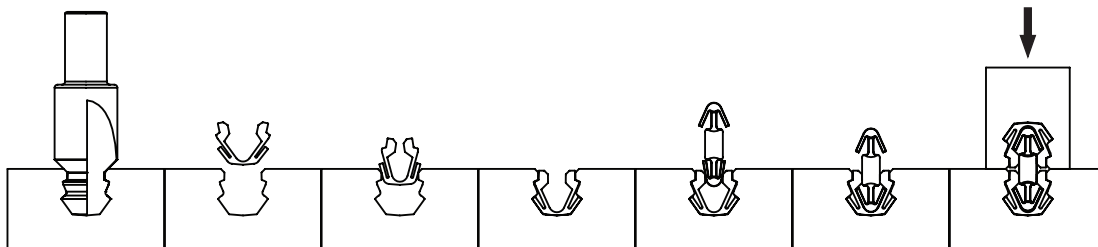
#### Travel



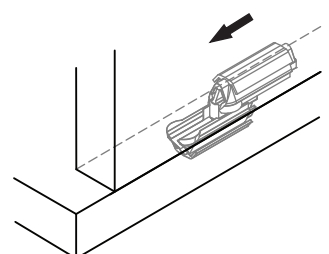
**Depth Tolerances:** 9.2mm (min) - 9.7mm (max)  
**Travel (Centre to Centre):** 20.6mm  
**Out to Out:** 30mm

*CNC speeds vary with different materials.  
 Maximum cutter rotation: 18,000*

## How it works



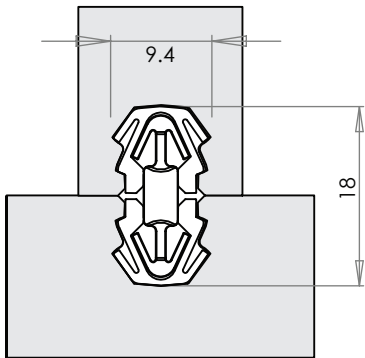
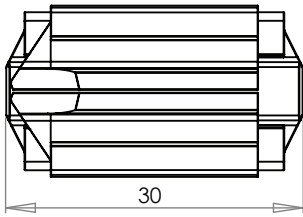
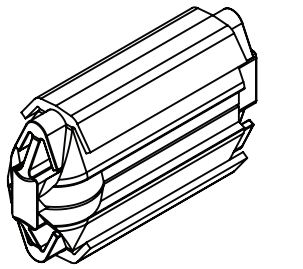
## Simply push or slide to connect



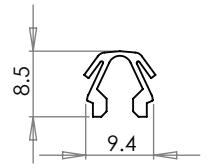
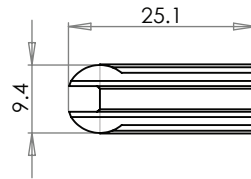
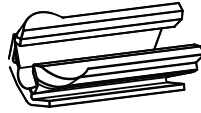
# OVVO® V Connection System

## V-0930 Permanent Specifications

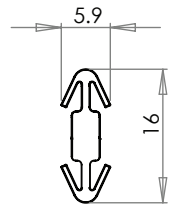
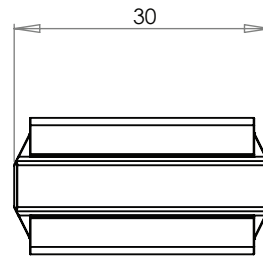
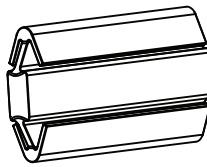
### V-0930 Permanent



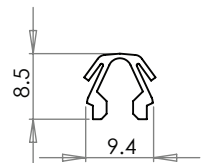
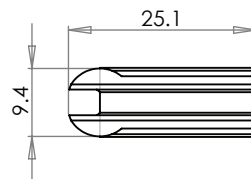
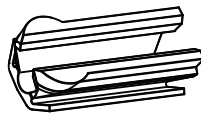
### V-0930PH



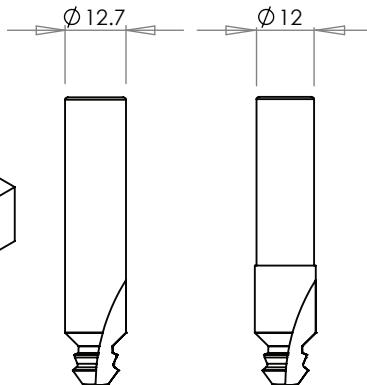
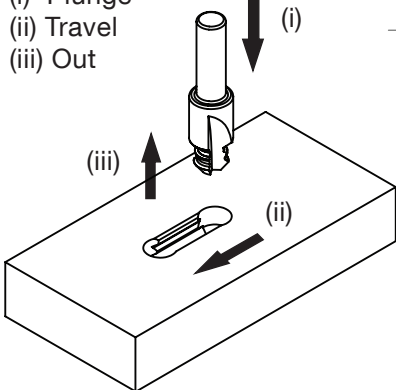
### V-0930PC



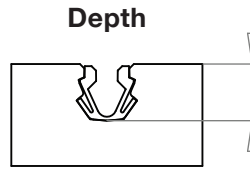
### V-0930PH



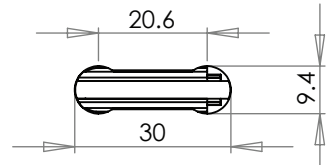
- (i) Plunge
- (ii) Travel
- (iii) Out



#### Depth



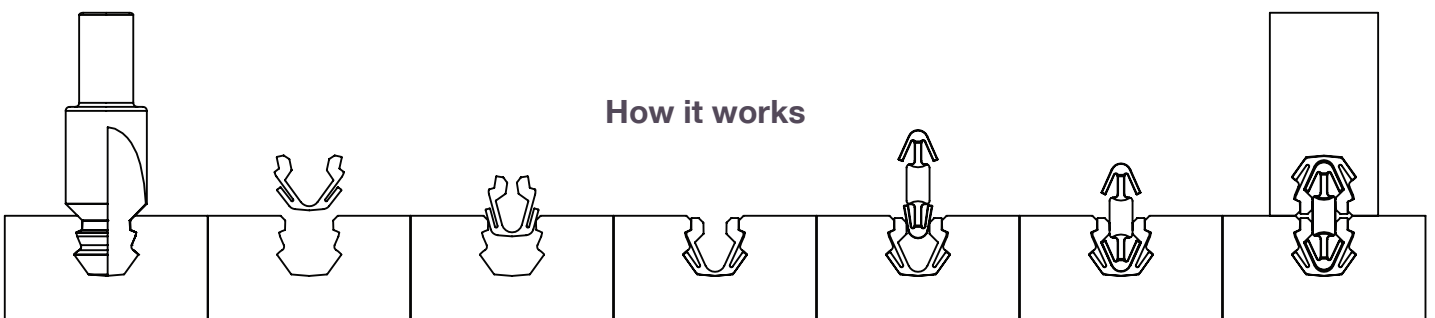
#### Travel



**Depth Tolerances:** 9.2mm (min) - 9.7mm (max)  
**Travel (Centre to Centre):** 20.6mm  
**Out to Out:** 30mm

*CNC speeds vary with different materials.  
 Maximum cutter rotation: 18,000*

### How it works



# V-0930 Recommended Minimum Board Depth

Recommended minimum board depth or thickness values for the V-0930 will change depending on both the substrate material used as well as the joint angle.



Fig 1



Fig 2

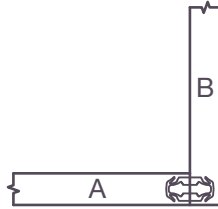


Fig 3

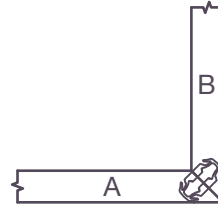


Fig 4

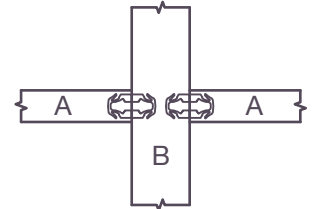


Fig 5

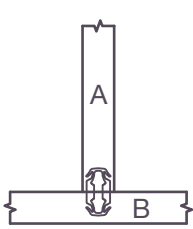


Fig 6

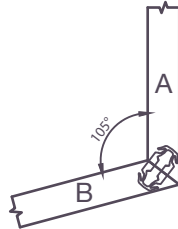


Fig 7

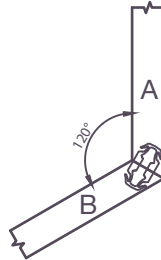


Fig 8

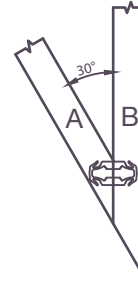


Fig 9

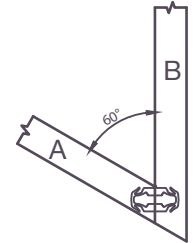


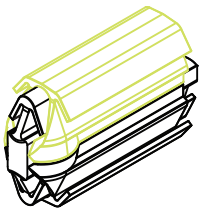
Fig 10

Minimum recommended measurements shown below are categorized according to two distinct groups of board material which share broadly similar connector retention properties.

	HPL, Composite, Solid Surface, Hardwoods, Birch Plywood	
	A	B
Fig 1	12mm	12mm
Fig 2	12mm	12mm
Fig 3	12mm	12mm
Fig 4	14mm	14mm
Fig 5	12mm	19mm
Fig 6	12mm	12mm
Fig 7	12mm	12mm
Fig 8	12mm	12mm
Fig 9	12mm	12mm
Fig 10	12mm	12mm

	Particle/Chipboard, Softwoods, MDF	
	A	B
Fig 1	15mm	15mm
Fig 2	12mm	12mm
Fig 3	16mm	12mm
Fig 4	15mm	15mm
Fig 5	15mm	19mm
Fig 6	15mm	12mm
Fig 7	15mm	15mm
Fig 8	15mm	15mm
Fig 9	15mm	15mm
Fig 10	15mm	15mm

These are guidelines only and OVVO® recommends trial connections be made before going into full production.

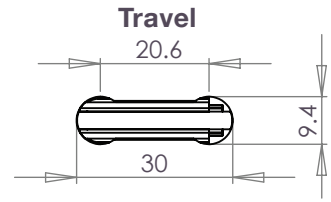
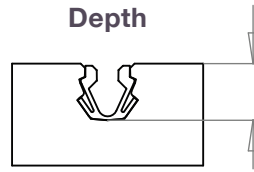
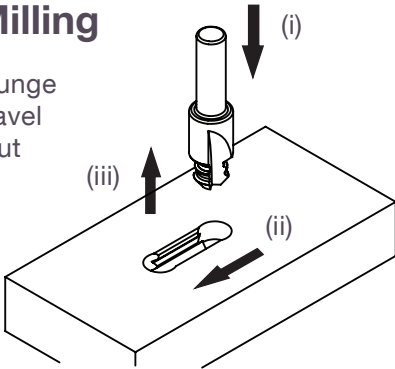


# V-0930

## Releasable Instructions

### 1. Milling

- (i) Plunge
- (ii) Travel
- (iii) Out



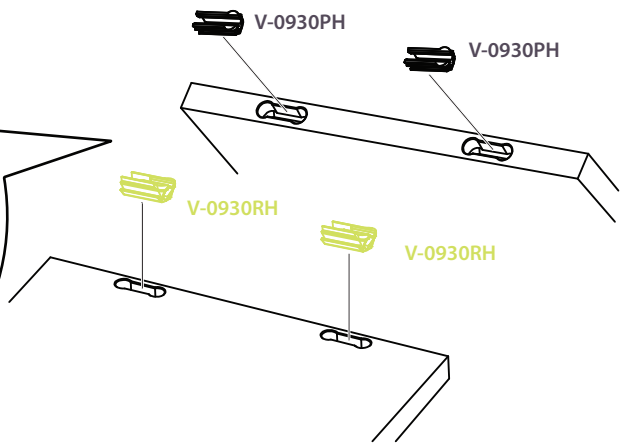
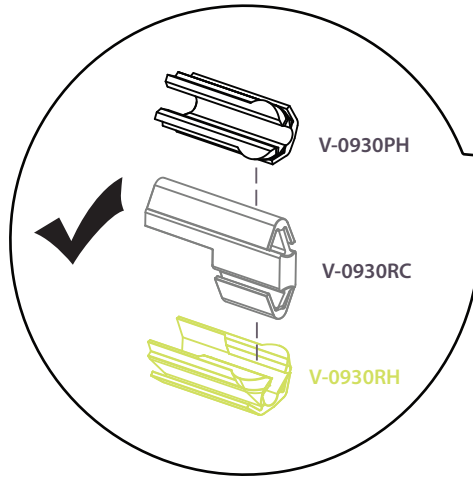
**Depth Tolerances:** 9.2mm (min) - 9.7mm (max)

**Travel (Centre to Centre):** 20.6mm

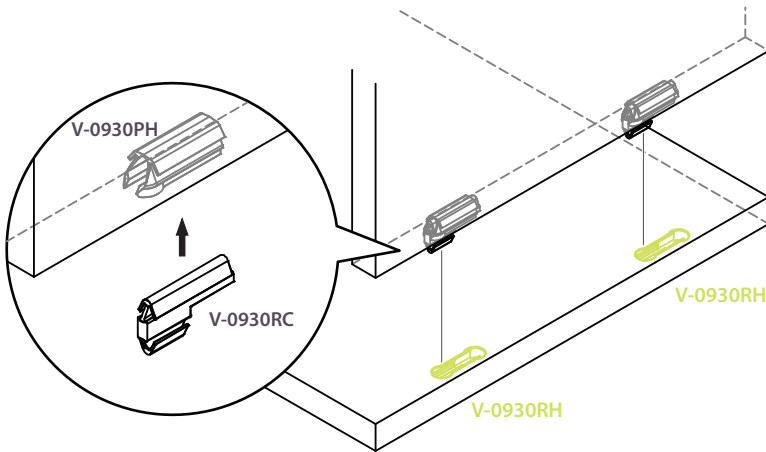
**Out to Out:** 30mm

*CNC speeds vary with different materials. Maximum cutter rotation: 18,000*

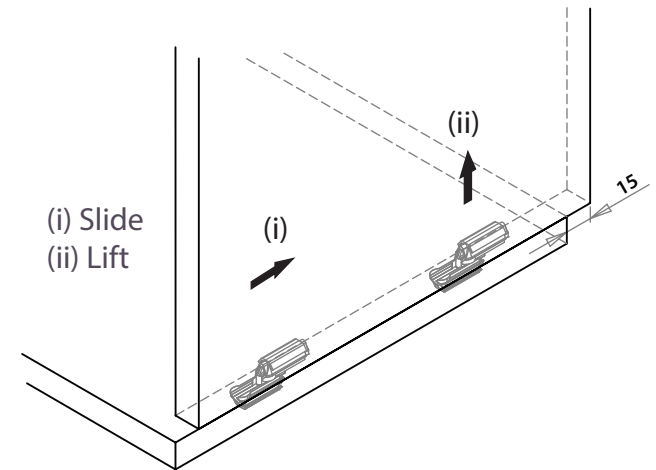
### 2. Housing



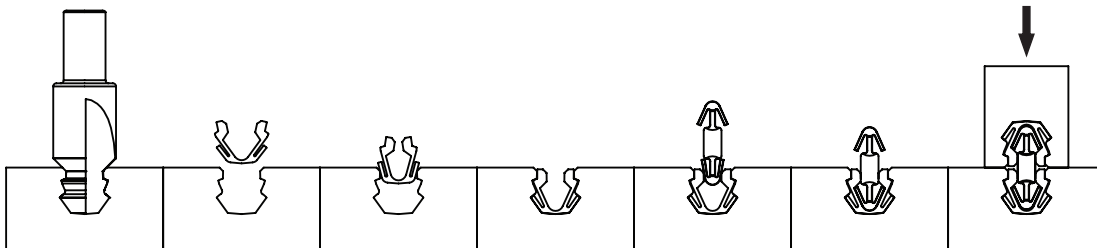
### 3. Assembly - Simply push or slide to connect



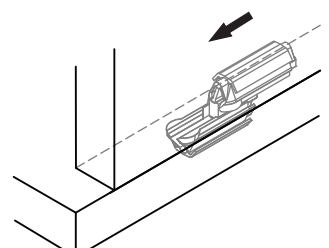
### 4. Release

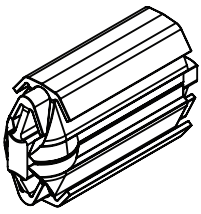


### How it works



### Simply push or slide to connect



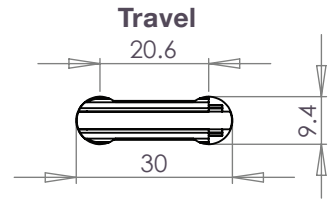
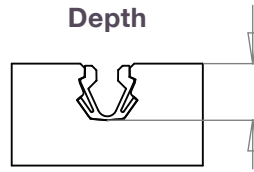
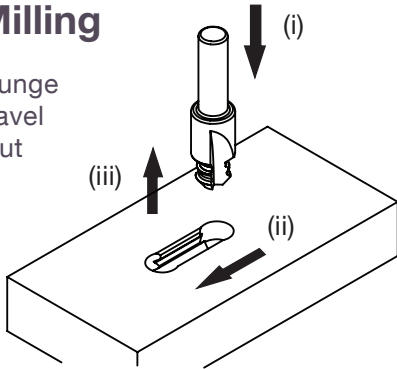


# V-0930

## Permanent Instructions

### 1. Milling

- (i) Plunge
- (ii) Travel
- (iii) Out



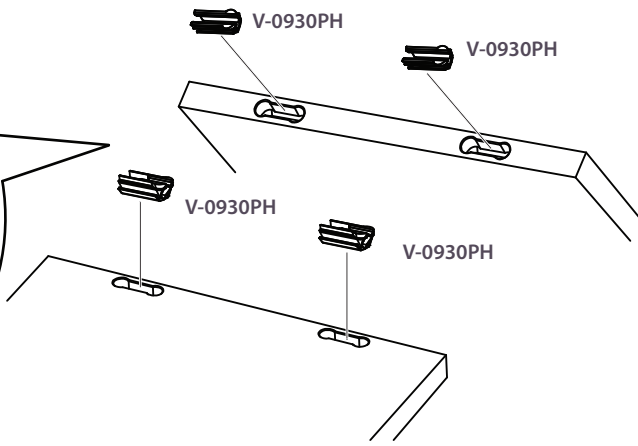
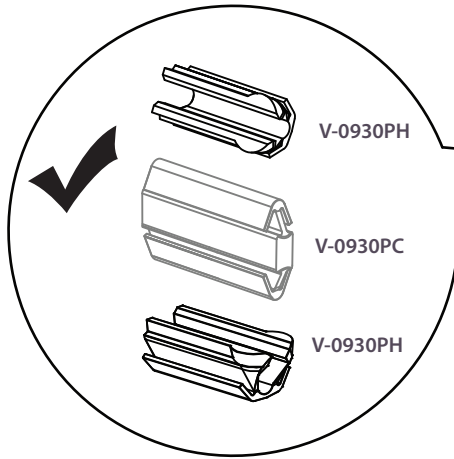
**Depth Tolerances:** 9.2mm (min) - 9.7mm (max)

**Travel (Centre to Centre):** 20.6mm

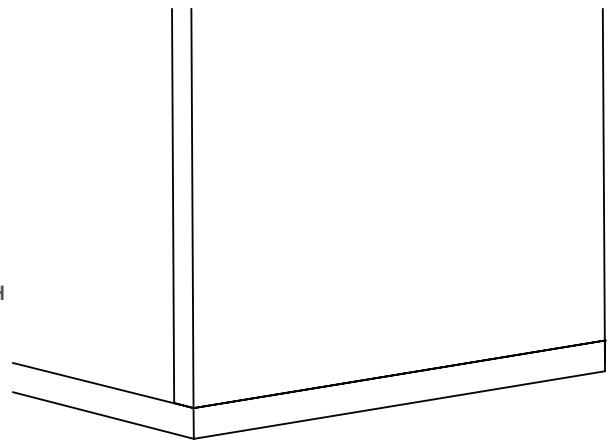
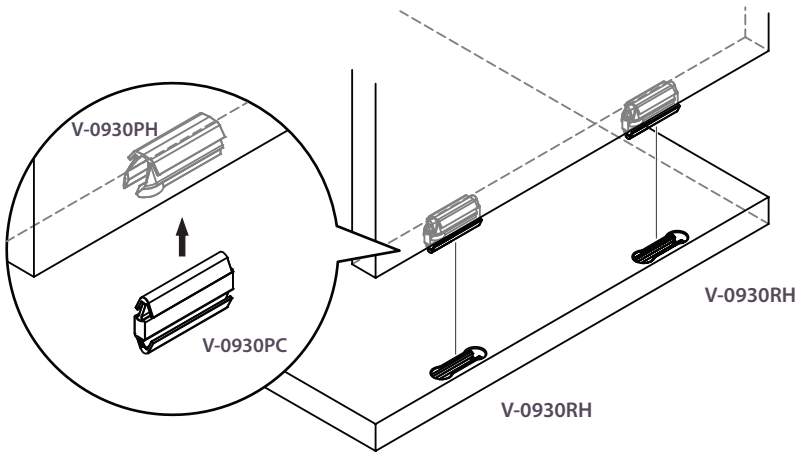
**Out to Out:** 30mm

*CNC speeds vary with different materials. Maximum cutter rotation: 18,000*

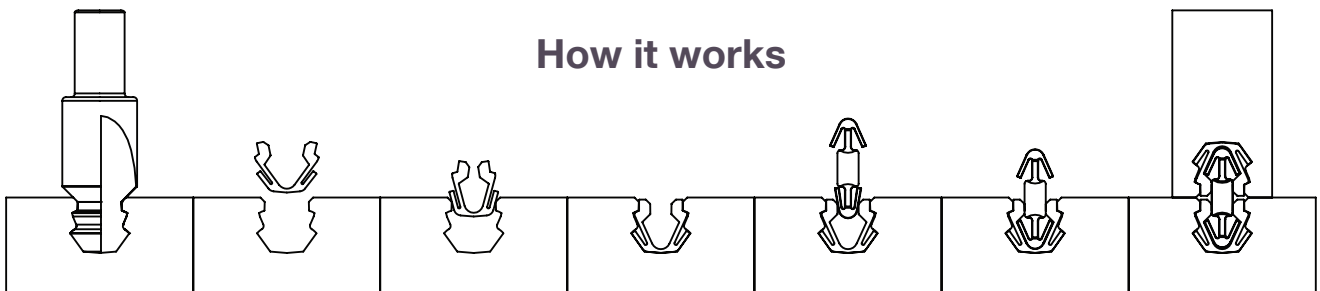
### 2. Housing



### 3. Assembly - Simply push into place to connect



### How it works



# OVVO® V Connection System

## Important! Make a test



**IMPORTANT! MAKE A TEST**  
**WICHTIG! MACHEN SIE EINEN TEST**  
**IMPORTANT! FAIRE UN TEST**  
**IMPORTANTE! FARE UN TEST**  
**IMPORTANTE! HACER UNA PRUEBA**

DEPTH TOLERANCES	
V-0930	9.2mm (min) - 9.7mm (max)

